



# SRV@Home

Distance Learning Plan

The School in Rose Valley

2020-2021 School Year



# SRV@Home Structure

- Each student has been issued an iPad and every teacher a MacBook Air.
- Lead Teachers will offer synchronous Zoom meetings to all students according to their respective distance learning schedules in whole-group, small-group, and individual formats on Monday, Tuesday, Wednesday, and Thursday.
- Specials Teachers will offer a combination of synchronous Zoom meetings and asynchronous content to students in kindergarten- through sixth-grade and asynchronous content to preschool students according to each pod's distance learning schedule on Monday, Tuesday, Wednesday, and Thursday.
- On Friday, teachers will engage in planning and professional development but asynchronous activities and Zoom sessions with auxiliary staff will be made available to students.
- Schedules will revolve around anchor points throughout the day, week and year (e.g. morning meeting, Wednesday Sing, and May Fair)
- Assignments and activities will be uploaded by 8:00 AM each weekday.
- Weekly schedules with Zoom links will be posted in See Saw for Preschool- and Lower Elementary-students and Google classroom for Upper-Elementary students at the beginning of each week.
- Teachers will respond to student and parent questions in a timely manner and be available during school hours to have individual meetings with students and families by appointment on a schedule convenient to both teacher and family.

# Preschool Distance Learning Schedule

Time	Activity	Platform	Synchronous/ Asynchronous
8:00-8:05	Welcome to the Day	Seesaw	Asynchronous
8:05-8:35	Choice Time	Zoom	Synchronous
8:35-8:45	Community Clean Up	Zoom	Synchronous
8:45-9:15	Meeting	Zoom	Synchronous
9:15-9:30	Movement Break	Seesaw	Asynchronous
9:30-10:00	Read-Aloud	Zoom	Synchronous
10:00-10:15	Snack	N/A	N/A
10:15-10:45	Daily Activity Monday - Math Exploration Tuesday - Creative Exploration Wednesday - Literacy Exploration Thursday - Nature Exploration	Seesaw/ Zoom	Both
10:45-11:15	Small Group Time ( $\frac{1}{2}$ group daily) Specials (other $\frac{1}{2}$ of group)	Zoom/ Seesaw	Both
11:15-11:45	Small Group Time ( $\frac{1}{2}$ group daily) Specials (other $\frac{1}{2}$ of group)	Zoom/ Seesaw	Both
11:45-12:15	Individual Time (each student 1x weekly)	Zoom	Synchronous
12:15-12:45	Lunch [Full Day students]	Zoom	Synchronous
12:45-1:45	Quiet Time	N/A	N/A
1:45-2:00	Meditation & Movement	Seesaw	Asynchronous
2:00-2:30	Individual Time (each student 1x weekly)	Zoom	Synchronous
2:30-3:00	Individual Time (each student 1x weekly)	Zoom	Synchronous

Light blue = Independent  
Dark blue = pod  
Green = individual or small group

Time	Activity	Platform	Synchronous /Asynchronous
8:00 – 8:30 AM	Morning Message	See Saw	Asynchronous
8:30 – 9:00 AM	Morning Meeting	Zoom	Synchronous
9:00AM–9:30AM	Screen Break	N/A	N/A
9:30AM -11:00AM	Academic Block / Specials	See Saw/Zoom	Both
11:00AM-11:45AM	Individual Check-Ins (each student 1 or 2 x/week)	Zoom	Synchronous
11:45 - 12:15 PM	Recess	N/A	N/A
12:15 - 12:45 PM	Lunch (optional)	Zoom	Synchronous
12:45 - 1:15 PM	Quiet Time	N/A	N/A
1:15 - 1:45 PM	Read Aloud	Seesaw/Zoom	Both
1:45 - 2:15 PM	Academic Block / Specials	See Saw/Zoom	Both
2:15 - 2:30 PM	Closing Meeting	Zoom	Synchronous
2:30 - 3:00 PM	Individual Check-Ins (each student 1 or 2 x/week)	Zoom	Synchronous

Light blue = Independent  
 Dark blue = pod  
 Green = individual or small group

## Lower Elementary Distance Learning Schedule

# Upper Elementary Distance Learning Schedule

Time	Activity	Platform	Synchronous /Asynchronous
8:00 - 8:30 AM	Individual Check-Ins (each student 1 or 2 x/week)	Zoom	Synchronous
8:15 - 8:45 AM	Morning Message	Google Classroom	Asynchronous
8:45 - 9:00 AM	Morning Meeting	Zoom	Synchronous
9:00 - 9:45 AM	Academic Block 1	Zoom	Synchronous
9:45 - 10:00 AM	Break	N/A	N/A
10:00 - 10:45 AM	Academic Block 2 or Specials	Zoom	Synchronous
10:45 - 12:00 PM	Independent Work	Google Classroom	Asynchronous
12:00 - 12:30 PM	Recess	N/A	N/A
12:30 - 1:00 PM	Lunch	Optional Zoom	Synchronous
1:00 - 1:45 PM	Quiet Time (Independent reading or Small Group Work)	N/A	N/A
2:00 - 2:45 PM	Academic Block 3 /Specials	Zoom	Synchronous
2:45 - 3:00 PM	Closing Meeting	Zoom	Synchronous
3:00 - 3:45 PM	Individual Check-Ins (each student 1 or 2 x/week)	Zoom	Synchronous

Light blue = Independent

Dark blue = pod

Green = individual or small group

# Guidelines for Parents

Establish Routines and expectations.

Define the physical space for your child's work.

Monitor communications from your child's teacher and the School and partner to create an engaging learning experience.

Begin and end each day with a check-in and allow children opportunities to process what is happening.

Allow for choice and intrinsic motivation.

Get outdoors.

Be mindful of your child's stress or worry.

Monitor how much time your child is spending online.

Leverage Community.

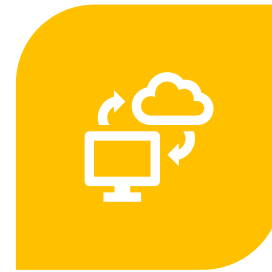
# Glossary of Terms



**BLENDED LEARNING:**  
LEARNING, WHERE DISTANCE LEARNING, IN ITS VARIOUS FORMS, IS COMBINED WITH MORE TRADITIONAL FORMS OF TRAINING SUCH AS "CLASSROOM" OR IN PERSON TRAINING.



**DISTANCE LEARNING**  
LEARNING IN WHICH THE TEACHER AND STUDENTS ARE SEPARATED BY TIME, LOCATION, OR BOTH. EDUCATION IS DELIVERED TO REMOTE LOCATIONS VIA SYNCHRONOUS OR ASYNCHRONOUS MEANS OF INSTRUCTION



**SYNCHRONOUS LEARNING:**  
REAL-TIME, TEACHER-LED ONLINE LEARNING, IN WHICH ALL PARTICIPANTS ARE LOGGED ON AT THE SAME TIME AND COMMUNICATE DIRECTLY WITH EACH OTHER. IN A VIRTUAL CLASSROOM SETTING, THE TEACHER MAINTAINS CONTROL OF THE CLASS, WITH THE ABILITY TO "CALL ON" PARTICIPANTS.



**ASYNCHRONOUS LEARNING**  
LEARNING IN WHICH INTERACTION BETWEEN TEACHER AND STUDENTS OCCURS INTERMITTENTLY WITH A TIME DELAY.

# A Question About ... Contact

---

## A project or assignment

- Your child's teacher

## A technology issue

- Your child's teacher or the head of school

## Social-emotional wellbeing

- School psychologist  
([susie@theschoolinrosevalley.org](mailto:susie@theschoolinrosevalley.org))

## SRV's approach to distance learning

- Head of school  
([rod@theschoolinrosevalley.org](mailto:rod@theschoolinrosevalley.org))



The School in Rose Valley  
20 School Lane  
Rose Valley, PA 19063  
(610) 566-1088

